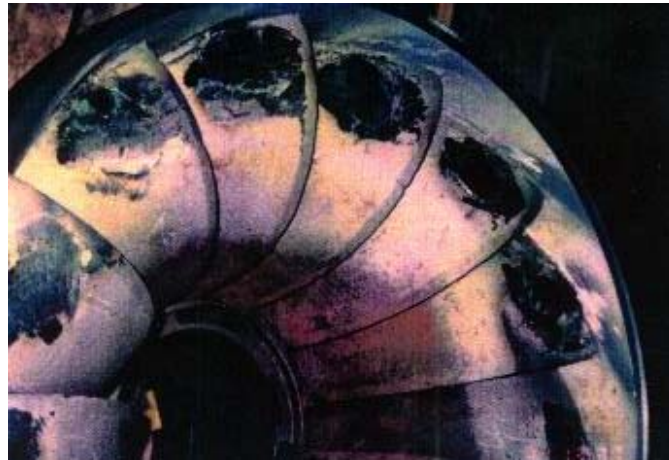




*Worldwide repairs carried out with PolymerMetal®*

**REP-# 066**



Repair of two turbine rotors. Damages were present at all areas of the blades where the water leaves the blades. First large holes have been welded. Then the erosive areas have been filled up with Ceramium, pasty. Finally a supplementary layer of VP 10-017 has been applied as protection against cavitation.

**MultiMetall**  
the MetalExistenceCompany®